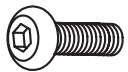


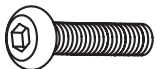
## Assembly Instructions ENZIO-B Bar Stool



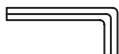
A (12 pcs)



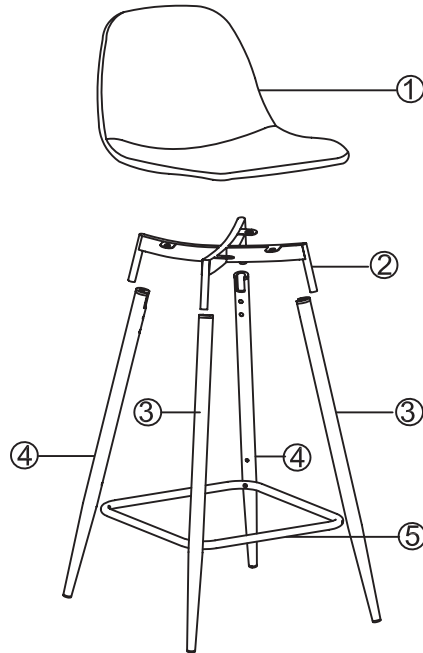
B (4 pcs)



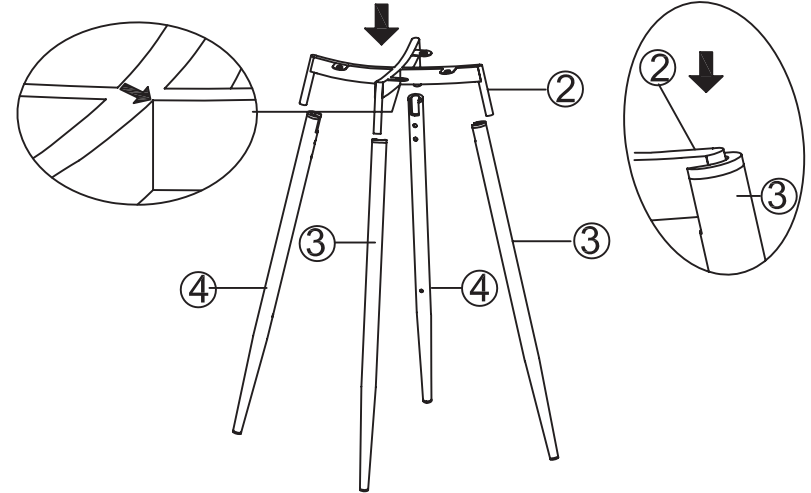
C (4 pcs)



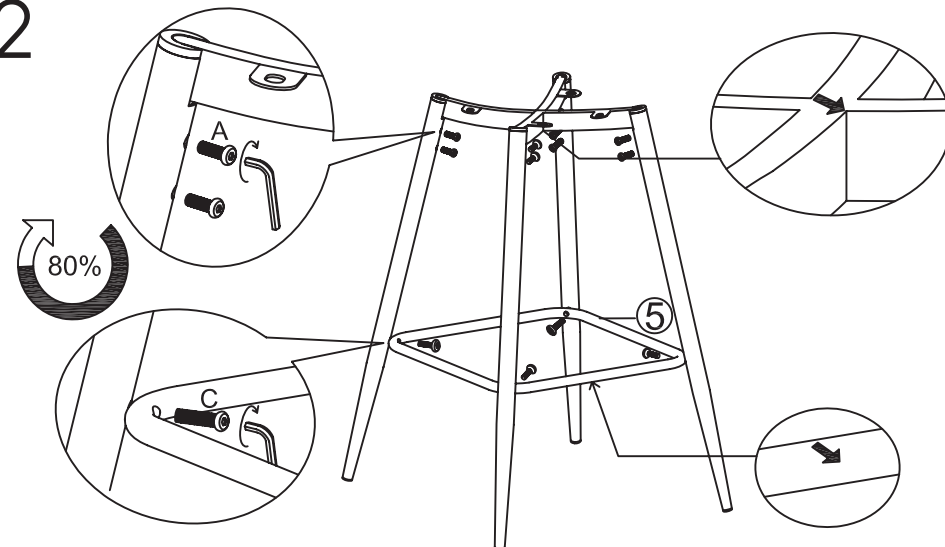
D (1 pc)



1



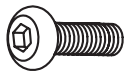
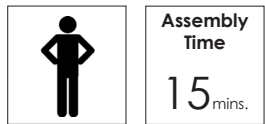
2



PLEASE NOTE: Check that you have received all components and hardware before assembling. If you are missing any parts, contact your retailer, or fax Eurø Style at 415.455.8033 or email: [cs@gotoeurostyle.com](mailto:cs@gotoeurostyle.com).

During assembly, hand tighten screws only. When the screws are in place, tighten completely.

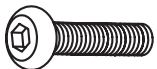
## Assembly Instructions ENZIO-B Bar Stool



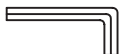
A (12 pcs)



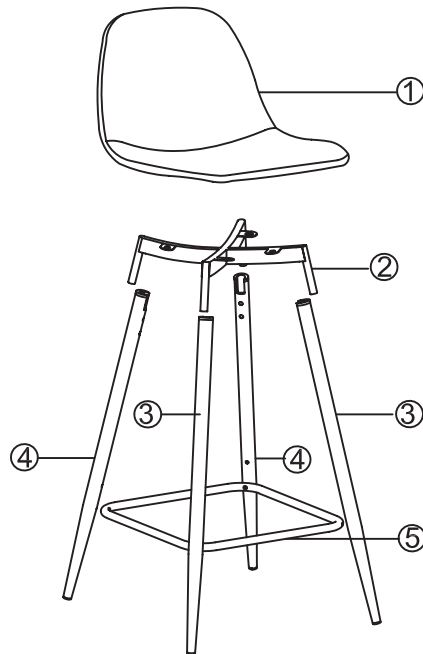
B (4 pcs)



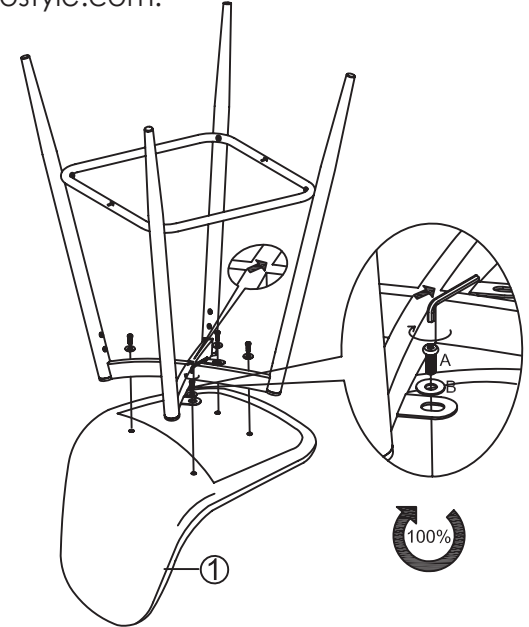
C (4 pcs)



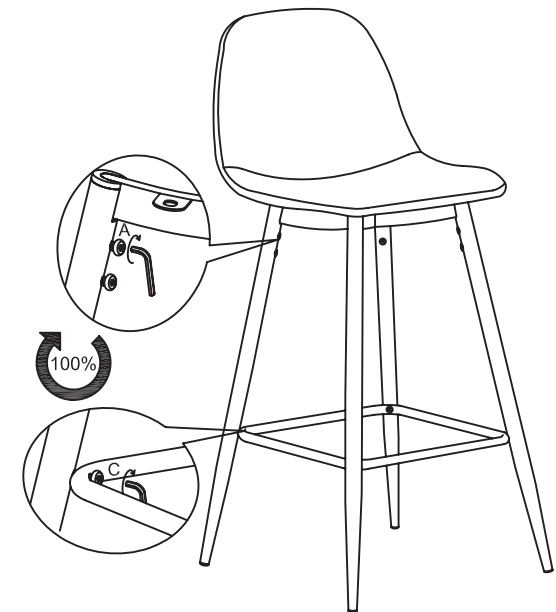
D (1 pc)



3



4



PLEASE NOTE: Check that you have received all components and hardware before assembling. If you are missing any parts, contact your retailer, or fax Eurø Style at 415.455.8033 or email: [cs@gotoeurostyle.com](mailto:cs@gotoeurostyle.com).

During assembly, hand tighten screws only. When the screws are in place, tighten completely.