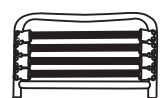


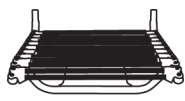
PLEASE NOTE: Check that you have received all components and hardware before assembling. If you are missing any parts, contact your retailer, or fax Eurø Style at 415.455.8033 or email: cs@gotoeurostyle.com.



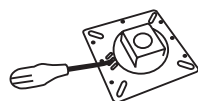
IMPORTANT NOTE: →
Screws and washers (Parts G) are preassembled into the underside of the seat (Part B). Remove screws and washers from seat and then use to attach Part C to Part B, as shown in step 1.



A (1 pc)



B (1 pc)



C (1 pc)



D (1 pc)



E (1 pc)



F (1 pc)



* see important note
G (4 pcs)
M8 x 14mm



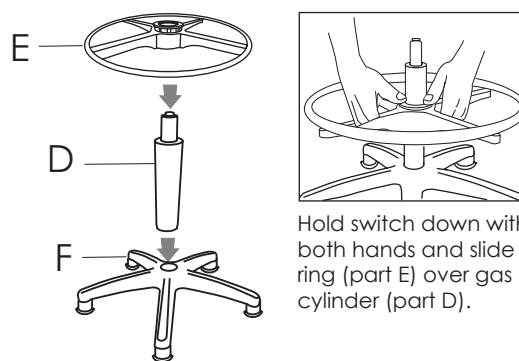
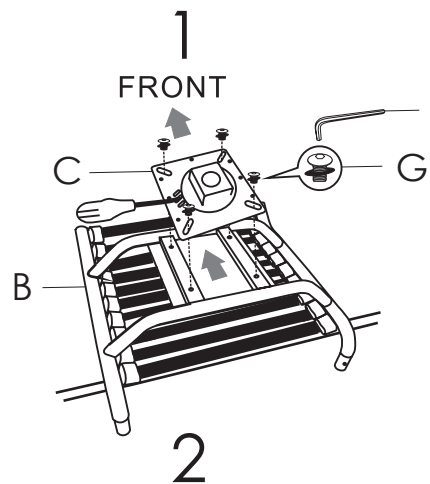
H (2 pcs)
1/4" x 5/8"



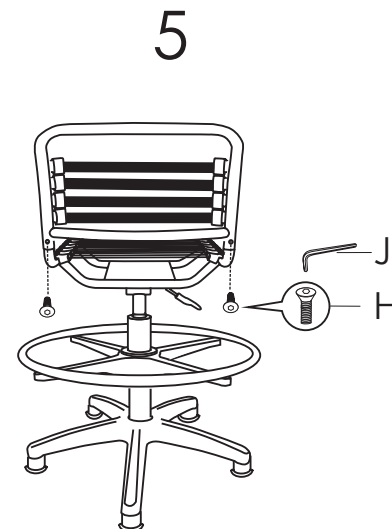
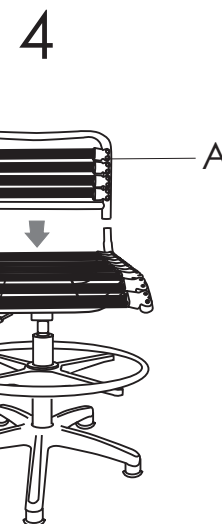
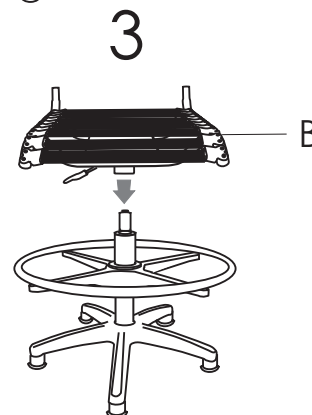
I (1 pc)
5mm



J (1 pc)
4mm



Hold switch down with both hands and slide ring (part E) over gas cylinder (part D).



During assembly, hand tighten screws only. When the screws are in place, tighten completely.